

Friday's Auction Items Listed Below 2 Rings 4:30 PM - Open for Preview at 10:00 AM

Construction Tools & Supplies: Note, there were approximately 20 work trucks and trailers that have all been emptied of their tools and will sell Friday night and will include the following and much more. Air compressors, nail guns, spikers, roof nailers, staplers, power saws, routers, drills, power drills, lots of cordless tools, lots of extension & step ladders, scaffolding, roof jacks, aluminum brakes, metal shears, saw horses, vacuums, power hole jigs, compound miter saws, circular saws, steel shear w/straight blade, dust collection equipment, small woodworking tools & accessories, lots of air tools, air hoses, ext. cords, hand tools including, hammers, tool sets, knives, rivet tools, saws & cutting tools, fasteners, magnetic tools, drywall tools, concrete & masonry tools, clamps & vises, levels, plum bobs, hand tool accessories and specialty tools, gloves, grabber cones and much more.



AUCTIONEER NOTE: After 165 Years of service Curry Lumber will discontinue their Hardware Store and Lumberyard operation in Wooster, OH. The longtime neighborhood hardware store and lumber yard in Wooster is auctioning off all of its inventory and equipment on Friday and Saturday June 15th & 16th. Previews will be held from 10 a.m. to the end of the day on Friday allowing the potential bidders to look over everything, from vehicles, fork lifts & skid steers to construction tools, building materials, office furniture and boxes of hardware, fasteners, paint and even a hard to find 73"x19' Redwood slab from California — as well as lots of vintage company memorabilia -logo signs, pictures, yardsticks, early 1900's cart with Model A wheels. Whether you're a contractor looking to pick up some tools, supplies or another truck for your crew, thinking about starting up a hardware, or maybe you are just wanting to load up on supplies for the garage or your hobby shop. Here is an opportunity you won't want to miss. The real estate is not for auction.

Note: The Curry Lumber Construction crews will continue serving all of its existing and new customers with the same great service under the new ownership of Springhill Construction Company now known as the Springhill Curry Construction Company and can be reached at 330-264-5223.

Online auctions are a fun way to find the items that you want at prices that you won't be able to resist. The bidding practice is one of the most important components of an online auction and one that many newcomers sometimes find intimidating. The knowledgeable experts at Kaufman Auction and AirWorks have decades of experience in the auction industry and partner with an online marketplace called Proxibid to consolidate the online auction process for potential buyers to place bids only on vehicles and woodworking machinery for this sale. For additional photos and more detail about the auction visit www.kaufmanauction.sale

AUCTION TERMS: Cash, check, or any major credit card with valid I.D. Announcements the day of the auction, take precedence over all previous advertising and statements. 5% buyer's premium for onsite sales plus 3% for use of Credit Card. Payment in full is expected before removing any items from the auction site. Different terms will apply for online bidding.

PICKUP TIMES & TERMS: All items must be removed during the schedule pickup time(s). Any items not removed during the pickup times will become the property of Kaufman Realty & Auctions & will be handled at our discretion. (unless other arrangements have been made). Pickup Times will be Saturday, (Closed on Sunday) Open June 16th, Monday – Wednesday, June 18th, 19, and 20th from 8:00 AM to 4:00 PM. (Forklifts On-site during scheduled loadout times. All items have to be removed by Friday, June 22nd.)

Lunch Stand: Yoder Veal

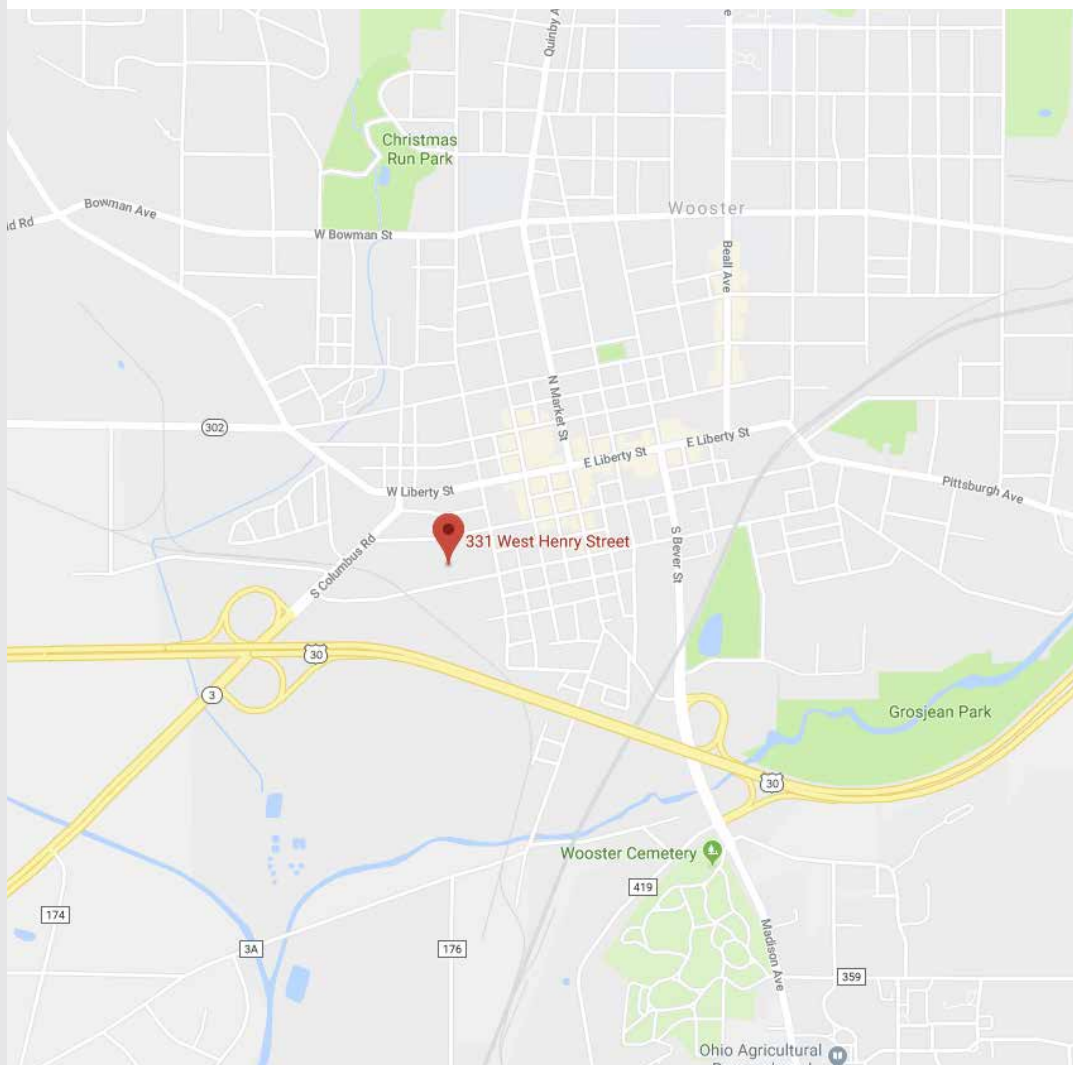
CURRY LUMBER LIQUIDATION AUCTION

*165 YEAR OLD HARDWARE STORE &
LUMBERYARD LIQUIDATION*

**FRIDAY JUNE 15TH, 4:30 PM – 2 CREWS
SATURDAY JUNE 16TH, 9:00 AM - 5 CREWS**

**Kaufman**
Realty & Auctions
(330) 403-4036
www.kaufmanauction.sale

PO Box 422, Sugarcreek, Ohio 44681



**331 W. Henry Street
WOOSTER, OH 44691**

DIRECTIONS: From Ashland, OH. Take US-250 E towards Wooster for 15.4 mi, Take OH-3 S exit towards Columbus Ave. Turn right onto OH-3N/S Columbus Rd for .3 mi, Turn right onto W. Henry St. Auction site will be on the left. From Dalton, OH. Take OH-30 W towards Loudonville for 13.5 mi, Take the OH-3 S Exit, Turn left onto S Columbus Rd. Turn right onto W Henry St. Signs Posted!!!

CURRY LUMBER LIQUIDATION AUCTION

165 Year Old Hardware Store & Lumberyard Liquidation

**FRIDAY JUNE 15TH, 4:30 PM – 2 CREWS
SATURDAY JUNE 16TH, 9:00 AM - 5 CREWS**

DOORS OPEN FOR PREVIEW: FRIDAY, JUNE 15 - 10:00 AM

331 W. HENRY STREET, WOOSTER, OH 44691

ONLINE BIDDING ON VEHICLES AND WOODWORKING MACHINERY

Trucks | Vehicles | Skid Steers & Fork Lifts | Antique Tractor | Woodworking Equipment | Lots of Paint & Fasteners
Construction Tools | Lumber | Hardware Inventory | Paint Shaker & Mixer | Vintage Curry Memorabilia & Antiques
Desks & File Cabinets | Store Shelving | Online Bidding Available on Vehicles & Woodworking Machinery



**Kaufman**
Realty & Auctions

Eli Troyer | Realtor, Auctioneer | 330.317.9259
Pedro Guzman | Auction Manager | 330.763.1424

AIR WORKS
CONSIGNMENT AUCTION LTD.


Reuben Troyer | Auction Manager | 330.749.5086
Marty Troyer | 330.749.4362

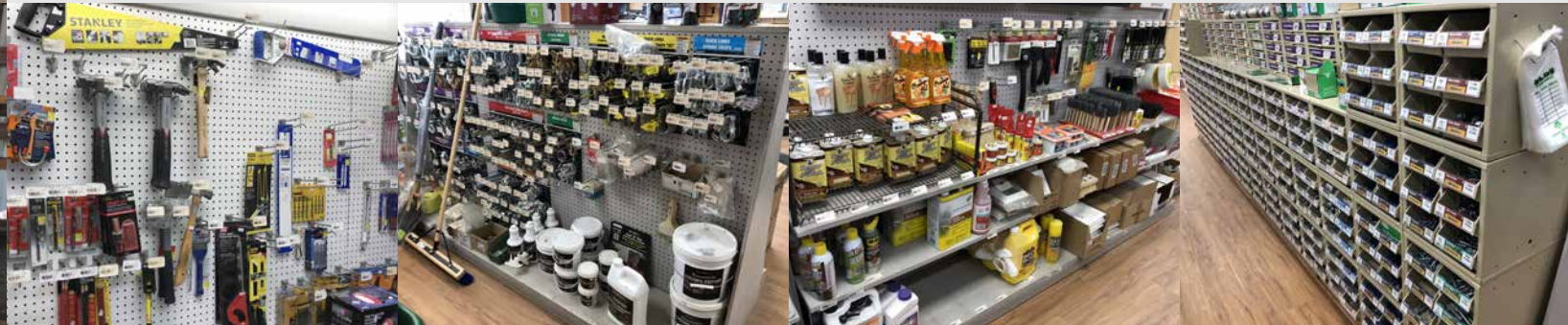
Ring 1- Vehicles, Trucks, Skid Steers & Tractors: 04' Chrysler Pacifica with 181,744 miles, 06' Chrysler Pacifica with 114,511 miles, 03' Ford E350 XLT super duty 12 passenger van w/tow package 196,626 mi., 05' Chevy Express Cargo Van w/ladder racks 165,180 mi., 03' Ford E350 XLT super duty van w/ladder racks and tow package 214,545 mi., 01' GMC 1500 Sierra w/ladder rack & tool box. 126,672 mi., 03' Dodge Ram 3500 Crew Cab (Diesel) w/construction tool cap. 303,558 mi., 05' Ford Ranger XLT 4x4 w/ladder rack and construction tool cap. 210,732 mi., 02' Ford F-350 Super Duty XLT Power Stroke Diesel w/ladder rack and construction tool cap. 245,929 Mi., 06' Ford F-150 XL w/tool boxes & ladder rack. 185,414 mi., 04' Ford F-150 XL Triton w/rack & cap. 135,166 mi., 05' Ford F-150 Lariat 5.4 Triton 4x4 w/tool box & bed liner 211,668 mi., 08' Dodge Ram 1500 w/ladder rack & construction tool cap and roll out bed. 82,065 mi., 01' Dodge Ram 2500 Laramie SLT V8 Magnum 4x4, tow package and brake assist. Steel ladder racks. 132,823 mi., 06' Ford F-250 XL Super Duty crew cab w/ alum. ladder rack & construction tool cap. 190,358 mi., 04' Ford F-250 XL Super Duty crew cab w/alum. ladder rack & construction tool cap 174,773 mi., 02' Dodge 1500 SLT crew cab with tool box and hitch. 174,137 mi., 14' Chevrolet Cargo Van w/ storage, 61,000 mi, 12' Dodge Ram 1500 Flex Fuel 4x4 w/ram box and tow package. 97,017 mi., **Flatbed Trucks:** 91' Mack CH612 Flatbed Truck with 49,333 mi. GVW 33,840. Weight 19,700. With 8x20 Godwin Flatbed/Dump-bed Model FB2054., 02' International 4400 DT466 Flatbed with dump-bed. Mileage 394,000 mi. HVUT 66000, Weight 25000, NEISS bed., 99' International 4700 DT466E Flat-bed with 8 x20 dump-bed. Mileage 289,177, GVW 52000, Weight 29300, 8x20 flatbed NEISS bed, **Dump Trailers:** 11' Tandem Axle 6'x10' Dump Trailer, Pequea L-1500 6 x 10 Dump Trailer, 11' Pequea L-1500 6' x 10'Dump Trailer, 04' 7 x 14 Dump Trailer, **Equipment Trailers:** 05' Corn-Pro 7'x18' Tandem Axle Equipment Trailer with Ramps. 05' Corn-Pro 7'x18' Tandem Axle Equipment Trailer with Ramps. '04 CornPro UT-18H, '11 Top Brand 19' long, **Skid-loaders, Forklifts & Misc.:** Cat 226B Skid-loader, 2 - Case 1840 Skid Loader, skid loader attachments. Antique Tractor 1953 Ford Jubilee Tractor fully restored, original owner, Ford 8N Tractor, Hyster H90 XL/2 diesel forklift, 9000 lb. & 3074 hrs. Toyota 7FDU35 diesel forklift, 8,000 lb & 11,182 hrs.



Ring 1 Woodworking Equipment: Extrema Straight-line rip saw Mod. XR12C 3PH 230V, Powermatic Planer 22" Spiral Head Mod. 201HH 3PH 240V, SCM Sandya 300 42" wide belt sander, 2 head, (lightly used) Mod. S300RCS110 Ser. AB/214736 3PH 240V, Powermatic 20" band saw Model 81, Delta drill press Model 17-900, Craftsman drill press Model, 2-Saw Stop 10" table saws w/t-guide fence system, Delta 8"Jointer Mod. 37-315, Steel City power-feed, Mod. 33656, Bosch 12" miter saw Mod. GCM12SD, Bosch REAXX portable table saw w/stand, Outdoor dust collection system with trailer Note; very clean line-up of woodworking equipment including all of your typical small woodworking hand & power tools.



Ring 2 & 3- Hardware & Retail Store Items: (All New) All your typical hardware items including hand-tools, Stanley tape measures, hammers, saws, knives etc., snips & shears, channel loks, vise grips, drill bits Freud router bits, Diablo saw blades, tool boxes, roof flashings, hinges, key blanks, key accessories, lockset parts & accessories, fasteners-collated, lockets, padlock & accessories, storm & screen hardware, etc. Large display of Midwest fasteners, misc. displays of fasteners, blades, router bits, knives, safety glasses, tools and Plumbing Supplies including bathroom hardware & accessories, faucets & sink repair parts, pipe fittings, etc. Cleaning Supplies including adhesive removers, air fresheners & deodorizers, carpet, upholstery & fabrics cleaners, cleaning chemicals, cleaning tools & supplies and floor care. Electrical Supplies including cables & wire, accessories, tape & terminals and light fixtures & parts. Lawn & Garden including decorative landscape structures & accessories, hoses & accessories, insect & pest control, lawn & garden tools and much more. Note; most of this stuff will be grouped into plastic totes and sold as a group.



Ring 3- Lumber & Building Materials: Lumber & Boards including, cedar wood products, dimensional lumber, boards, tongue & groove boards, treated lumber, etc. All of your typical lumber 2x8, 2x10 etc. to many sizes to list. Trusses & Engineered Lumber and much more. **Special Woods:** cedar boards oak boards, poplar boards and a one of kind Redwood board cut in 1928 73inches by 19 feet by 1-1/2 inches. Pole Barn & Post Frame Materials including nails, screws, trims, hardware, columns, tools & accessories, lots of doors & windows. Decking & Deck products including pressure-treated decking lumber, deck posts & columns, concrete deck pier, etc. Drywall including panels, tape, screws, tools, joint compound, primers and sealers, insulation, patching & repairs supplies, etc. **Insulation:** Approximately 20+ pallets of Owens Corning Insulation including several different sizes and R-Values. Blown-In insulation. Owens Corning insulation blower.



Ring 4- Paint & Fasteners: Red devil model 5990 auto platform paint shaker, Paint Mixer, Matching System and lots of Valspar paint. Don't underestimate the amount of new paints and stains we will have to offer at this sale. There will be many full shelves of paint. Adhesives & tape, brushes, rollers & trays, cleaners, thinners & removers, exterior paint & stain, interior paint & stain, paint additives, paint tools, patching & repair, sandpaper & abrasives, spray paint, etc. Fasteners: we will have \$20,000. + in small boxes of fasteners from 1lb. to 50lb. boxes from finish nails to bulk roofing and framing nails as well as lots of screws including screws for decking and metal roofing and much more. Lots of Simpson and Pro-Fit products.



Ring 5- Office Furniture, Supplies & Shelving: Desks, File Cabinets, Fire Safes, Misc. Office Furniture & Supplies, Store Shelving: Office furniture including desks, chairs, storage drawers, store counters, etc. Shelving includes medium and heavy duty single and double sided racks, display cases, wire tire shelf display racks, gondola shelving lozier complete section store aisle, etc. **Miscellaneous:** Used mowers, welded wire, concrete mixer, concrete molds, 8' level rail kit, metal storage cabinet, Slogger shoes, Farmer's Almanac, decorative stone and much more. **Vintage Memorabilia & Antiques:** lots of old lumber carts, logo signs, pictures, yardsticks, tripod, transit on tripod, wrenches, stapler, early 1900's cart with Model A wheels, scales and much more.

www.kaufmanauction.sale