

EXCELLENT RETIREMENT LARGE FARM EQUIPMENT AUCTION

Online bidding on lots
1-34 to begin at approx
11:15 AM

Saturday, December 21, 2019 @ 10:30 AM

Location: 1776 K Ave, Hubbard, Nebraska, 68741. From Hubbard, NE go 2 1/2 miles northeast on Hwy 35 and 1/2 mile north on K Ave at mile marker 62. OR from Dakota City, NE go 6 1/2 miles west on Hwy 35 then 1/2 mile north on K Ave. Auction signs will be posted. The Snack Shack will be available.

Combine & Heads

- 2014 John Deere S660 combine, 1,337 engine hours, 927 separator hours, has Maurer grain tank extension, has twin spreader-no chopper, deep tooth adjustable chaffer, 22.5' unloading auger, front 520/85R42 radial duals, 28Lx26 rear rubber, GPS ready, one owner, SN 1H0S660SCE0766032 (**Lot 31**)
- 2011 John Deere 608C 8-row 30" corn head with poly snouts, has grain brush saver kit on gathering chains, with stalk stompers, one owner, SN 740898 with older homemade head mover on John Deere gear (**Lot 32**)
- 2011 John Deere 630F Hydra Flex 30' bean head, one owner (**Lot 33**)
- Unverferth head moving cart (**Lot 34**)

Tractors & Accessories

- 2010 John Deere 8320 RT track tractor, approx. 4,495 hrs, deluxe cab, 76" track spacing, PS 16/4 transmission, 26-mph, HID light pkg, premium radio pkg, with 22) front weights, 60-gal per minute hyd pump, electric power adjust mirrors, 3pt, cat-4 quick hitch, quad hyd, big 1,000 PTO shaft, with radar, one owner, SN 1RW8320P902161 (**Lot 28**)
- 2009 John Deere 8320RT track tractor, 2561 hours, deluxe cab, 72" track spacing, PS 16/4 transmission, 26-mph, HID light pkg, premium radio pkg, with 22) front weights, 60-gal per minute hyd pump, electric power adjust mirrors, 3pt, cat-4 quick hitch, quad hyd, big 1,000 PTO shaft, has radar, one owner, SN RW8320R900122 (**Lot 29**)
- 2007 John Deere 6430 MFD premium tractor, 5,108 hrs, deluxe cab, air comfort seat, 3pt, triple hyd, with (9) John Deere front weights, 540/1000 PTO, 16.9x38 rear rubber, and 420/70R 24 front rubber, has auto quad 24/24 transmission with reverser, deluxe exhaust, with front fenders, SN L06430K521463 (**Lot 30**)
- 1956 Super M Farmall tractor
- 8) John Deere rear wheel weights

Semi's & Grain Trailers

- 2004 Freightliner Conventional Columbia semi with sleeper, Big Detroit diesel engine, approx. 1,359,354 miles, Fuller 10-speed transmission, white in color, VIN 1FUJA6CK74DN30250 (**Lot 24**)
- 1999 Freightliner FLD120 with sleeper, 833,555 miles, with Fuller manual 10-speed transmission, Cummins 425 HP engine, white in color, VIN 1FUJDCYBOXLB12803 (**Lot 25**)
- 2009 Wilson Pace Setter 42' double ag hopper bottom grain trailer with auto roll tarp, remote, air ride, VIN 1W1MAFYA3AA254950 (**Lot 26**)
- 2008 Wilson Pace Setter 42' double ag hopper bottom grain trailer with auto roll tarp, remote, air ride, VIN 1W1MAFYA79A252615 (**Lot 27**)

Grain Cart

- 2005 Brent 1084 Avalanche grain cart with roll tarp and scale, has big 1,000 PTO, NEW 35.5 Lx32 rubber, one owner, roll tarp cable needs work (**Lot 23**)

Skidloader and Accessories

- 2005 JCB 1110 Robot diesel skidloader, 1,275 hrs, chains, enclosed cab with side door, has heat, no AC, with bucket, one owner, VIN SLP111WS4U1134034 (**Lot 19**)
- Skidloader quick tach bucket with tines & grapple (**Lot 20**)
- Rock bucket with tines for skidloader (**Lot 21**)
- Set of quick tach pallet forks (**Lot 22**)
- Older 8' skidloader bucket

Fork Lift

- 2010 Yale GLP050LX propane forklift, fore/aft controls, 1,434 hrs, side shift, with solid rubber tires, capacity 4750 lbs., SN A974V01586H (**Lot 18**)

Field Cultivator

- 2014 Wil-Rich XL2, 38' hyd double fold field cultivator with 3-tine drag & rolling basket, one owner, SN AGCWFLHOCX461176 (**Lot 17**)

Disk

- Case IH 340 True-tandem 34' disk with gauge wheels on front wings, with Summers MA1420 rolling basket, one owner (**Lot 16**)

Planter

- 2013 Kinze 3600 16-row/32-row 30" spacing's precision inter-plant air/vac planter, with ADS air system, Martin row cleaners, has 2020 air assist down pressure, front boxes with vacuum and ground drive, electric row clutches on backs only, 2) 40 unit twin-line poly fill tanks, 20/20 monitor, and scale, on quad wheel Kinze hyd running gear, one owner, SN 626834 (**Lot 15**)

Sprayer

- 2007 Spray Air Trident TM II Signature Series 3600-90TS, 1,200 -gal poly tank sprayer with 80' hyd booms, rinse tank, inductor tank, hyd pump, one owner, SN 36312 (**Lot 14**)

Mower

- Woods Bat Wing BW1800 rotary 18' mower with new gear box and small 1,000 PTO, SN 966181 (**Lot 13**)

Augers and Conveyors

- Westfield 61'x10" dia side PTO auger, approx. 2 yrs old (**Lot 7**)
- Westfield Model WR 100-31, 31'x10" dia truck auger (**Lot 8**)
- 2010 Mayrath 57'x10" dia side PTO auger (**Lot 9**)
- Peck 56'x10" dia side PTO auger with hyd lift (**Lot 10**)
- Top Air 30' seed conveyor with electric motor (**Lot 11**)
- Peck incline hopper auger with orbit hyd drive (**Lot 12**)

Trailers

- Load Trail 5th wheel dump trailer, with hyd steel box and drop down sides, tandem axle, 14'x8' (**Lot 5**)
- 2015 Finish Line 22'-9"x7' wide tilt bed pull-type tandem axle trailer (**Lot 6**)
- Harbor Freight 4'x8' light duty single axle trailer
- 7'x12' steel utility trailer
- High View 6'x16' tandem axle livestock trailer with divide gate and rubber mate floor
- Homemade tandem axle pull-type trailer with 300-gal fuel tank & electric pump

Farm Equipment

- Westendorf 12' 3pt box scraper (**Lot 3**)
- Blue Jet 5-tooth sub tiller with coulters (**Lot 4**)
- Homemade 7' blade with hyd cylinder
- Land Pride 45, 3pt 8' blade
- Year-A-Round 300-bu gravity box with seed auger, gas over hyd, 8HP motor, talc tank, no gear
- 1,500-gal liquid manure tank wagon on single axle cart with PTO pump
- Older 12' homemade box scraper

UTV

- 2008 Kubota RTV500 camo side by side, electronic fuel injected, 431 hrs, with dump box, one owner, SN 10610 (**Lot 2**)

Dirt Bike

- 2013 Kawasaki KLR 650 dirt bike, 5,364 miles, VIN JKAKLEE11DDA58810 (**Lot 1**)

GPS System

- Starfire ITC 3000 globe
- Starfire ITC globe
- 2) 2600 GPS monitors, one receiver is RTK ready

Fuel Tanks

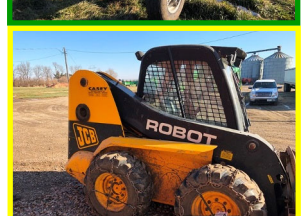
- 500-gal diesel tank with electric pump
- 500-gal fuel tank converted from propane tank, with electric pump on tandem axle trailer
- 100-gal portable fuel tank with electric pump
- 100-gal portable fuel tank with electric pump
- Aluminum 100-gal diesel tank with 12V pump
- 55-gal plastic DEF tank with electric pump

Misc.

- 1,200-gal poly water tank on stand with 2HP Baldor motor with transfer pump & inductor tank
- Aladdin hot water power washer
- Hobart Handler 187 small wire welder, 230V
- Pacific Equipment 7,500-watt high performance diesel generator
- Pacific Equipment 8,500-watt gas generator
- Kamak cement mixer with small electric motor
- Rylee Root Ripper stump bucket tree spade attachment
- Behlen 3pt adjustable blade
- 7' steel flatbed for a pickup
- Dickey John GAC 2500 Agri-System grain moisture and weight analysis tester
- Bosch self-leveling laser level
- Assort large wooden high line poles, some approx. 50' long, 12"-24" dia
- 16) Yetter planter closing wheels
- Traeger smoker

MORE PICTURES ON OUR WEBSITE!

**Excellent
Equipment near
Hubbard, NE**



Bartels Ag, Inc

Jeff: 712-259-3284

Live Bidding Terms: Not responsible for accidents or theft of items purchased on premises. Buyer's number system used. Driver's license required for bidder's number. Cash, check, credit card (with convenience fee) accepted. Clerks reserve the right to verify all unknown checks. ALL ITEMS MUST BE PAID FOR BEFORE REMOVING THEM FROM THE PREMISES. While every effort has been made to ensure the accuracy of this listing, no responsibility is assumed for additions, deletions or corrections to this ad. Information contained within this advertising was received from sources deemed to be reliable; however, no warranties are provided by the auction company regarding these. All prospective bidders are encouraged to take whatever steps necessary to satisfy themselves regarding the sizes, condition, and all other information provided in this advertisement. Auction company acts only as agent between seller & buyer. LOOK BEFORE YOU BUY! ALL ITEMS ARE SOLD "AS IS - WHERE IS." THERE ARE NO WARRANTIES EXPRESSED OR IMPLIED.

Online Bidding Terms: Equipment will be sold LIVE & ONLINE by lots. For online bids ONLY there will be a 5% buyers premium per item with a \$1,000 cap fee per item. View www.vw72.com for more info & photos. Online bidding will begin December 21, 2019 at approximately 11:15 AM. This property is being sold "as-is" "where-is". Items can be picked up the day of the auction or at an approved pick up time. Payment must be verified and received prior to pick up. Additional terms and conditions are posted online. Potential bidders must agree to these terms and conditions prior to registering and bidding. Online announcements will supersede any written advertising information.

Auctioneer's Note: WOW! We welcome the opportunity to handle this great retirement auction for the Bartels! This auction offers you the potential to buy some of the best equipment you will find. Additional photos online. We will begin on small items at 10:30 AM. The 34 major items of equipment will be offered live and online beginning at approx. 11:15 AM. Upon the conclusion of the 34 major items, we will then sell the remaining equipment and small items. Thanks for your interest in this great auction! Please contact Jeff or ourselves with any questions or if we can assist you. Rich, Todd, Levi & Brent

**Vander Werff
Associates, Inc.**

www.vw72.com

215 Main St.
Sanborn, IA 51248
712-729-3264
auctions@tcaexpress.net



Rich Vander Werff
Sanborn, IA
712-261-0298

Todd Hattermann
Paulina, IA
712-348-0111

Auctioneers

Levi Mouw
Edgerton, MN
712-441-6898

Brent Vander Werff
Sanborn, IA
712-540-7591

Equipmentfacts
Powered by TractorHouse.com, MachineryTrader.com, TruckPaper.com & MarketBook.com