

Oilfield Business AUCTION

**Seller: Arnold Michaelis Trust /
L & M Well Servicing, Inc. /
J & M Well Servicing**

Sat., July 11, 2020 - 9 a.m.

Location: 539 S Fossil, Russell, KS

**Concession Stand will be available by Alice Hammack with all
the proceeds going to "Operations Christmas Child"**

Real Estate will sell at 2 p.m. Seller: Arnold Michaelis Trust

Tract I:

Location: 539 S Fossil, Russell, KS

Legal Description: Russell City Lands, Section Thirty-four (34) Township Thirteen (13) South, Range Fourteen (14) West of the 6th P.M. Beginning 613.8 Feet South and 40 Feet West of the Northeast Corner of the Southeast Quarter (SE/4), Thence South 226.14 Feet, Thence Southwesterly 72.28 Feet, Thence North 95.43 Feet, Thence East 195 Feet to the Point of Beginning Section Thirty-four (34) Township Thirteen (13) South, Range Fourteen (14) West of the 6th P.M.

General Description: This property is zoned commercial totaling 2.2 acres with a 5,400 sq. ft. block building built in 1950. The building is 60' X 90', it has an area 26' X 32' used for office, two bathrooms, foyer, changing room, all with overhead storage. There is a 14'8" X 26' wash bay/paint booth, the building has two floor pits, two walk in doors and two overhead doors, one is 16' X 12'8" and the other is 10' X 9'. The property does have other out buildings and is on city utilities and water. The property location has the frontage road of Fossil Street and the rear being S. Front Street.



Tract II:

Location: 543 E 1st Street, Russell, KS

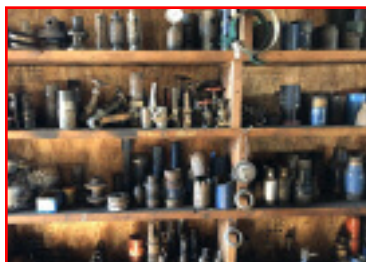
Legal Description: Laing and Beardsley's Addition, Section Twenty-six (26), Township Thirteen (13), Range Fourteen (14) West, Block Six (06), Lot Fifteen (15) Section Twenty-six (26), Township Thirteen (13), Range Fourteen (14) West of the 6th P.M.

General Description: This lot is a 50' X 122' lot with a 12' X 24' storage shed on it. The property is zoned residential and has city utilities and water available.



Terms, Taxes, & Title Insurance: Ten percent (10%) down day of sale, balance due upon closing. This auction sale is not contingent upon the purchaser's ability to finance the purchase. Buyers must make finance arrangements, if needed, prior to the auction. Seller shall pay all the 2019 taxes and prior year taxes. 2020 taxes shall be prorated to date of closing and subsequent years' taxes shall be the responsibility of the Buyer. 2019 taxes were \$2,253.66 for Tract I and \$62.80 for Tract II. Title insurance shall be used to prove clear and merchantable title with the Buyer & Seller sharing equally the owner's policy expense. The mortgagee's policy, if required, will be the expense of the buyer.

**To view this property please contact Jason to make arrangements.
This Real Estate is selling under the firm of Hamit Land & Auction Inc.
Jason W. Schneider, Salesperson 785-650-2433
Donald L. Hamit, Broker 888-573-6585**



Vehicles: 2000 Chrysler Mini Van, VIN 2C4GP54L51R233813, 147,913 miles, power locks and windows
2000 Ford F150, VIN 1FTRX18WXYKB01547, 239,000 miles, ext. cab, automatic, Triton V8, 4X4 has been disconnected, toolbox
1990 4600 International, VIN 1HTSBZPM9MH349135, 7.3 diesel, 4 speed, air bag system, 188" wheel base, under mount toolboxes and trays, has 4X6 Gaso mud pump w/231 Chevy motor
1998 GMC 2500, SL, VIN 1GTGCZ4R8WE556014, 171,875 miles, 350 Vortec Eng., toolbox
1998 4900 International winch truck, VIN 1HTSDAAN3XH207963, 466 IH motor, 6 speed, 4 speed Brownie Light winch, gin poles, tool boxes, rolling tail board, 272" wheel base
2000 4700 International flatbed, VIN 1HTSCAAM61H381382, Eco automatic trans., 466 IH motor, 254" wheel base
1998 Ford F250, XL, VIN 1FTPF28L5XKA26003, Triton V8, automatic, toolbox
1998 Chevy 3500, VIN 1GCHK39J2WF072026, 454 Vortec Eng., 106,000 miles, ext. cab, 4X4, flatbed, 12 K Badland winch, gin poles
1962 GMC farm truck, VIN 2C633K108980, 15' bed, wood floor, 4X2 speed trans., rough
1989 Ford F150, VIN 1FTEF15N5KPA69713, automatic



Tractor/Combine/Gator/Mowers/Equip.:

2001 Massey Ferguson 1165, SN KN0606, 1,250 hrs., 232 loader, 3 point, PTO, MFWD
International 715 combine w/header
John Deere Gator 4X2, 698 hrs., hydraulic dump bed
John Deere L110 riding mower

John Deere 110 mower, w/ snow blower, mower deck, push blade
Lawn Boy riding mower
King Kutter rotary mower, 5 ft. Post hole digger
Back blade Road drag
Ward front tine roto tiller
5 HP rear tine Roto tiller, 17"

Trailers:

8' X 28' flat bed trailer, tandem axle, reverse fifth wheel hook up, homemade
6' X 26' gooseneck flatbed trailer

2- single axle pipe trailers
¾ Ton pickup bed trailer, utility boxes
2 wheel trailer
8' X 16' stock trailer, wood floor
6' X 10' 2 wheel utility trailer

Guns:

Harrington Richardson Deluxe Topper model 98, 20 gauge, single shot, SN AN224221
Daisy Red Rider model 1938 BB gun, SN G308685
Savage Arms Springfield model 67E, 12 gauge pump, 2 ¾"
Winchester model 1300, 12

gauge, SN L3097957, 2 ¾" & 3"
Mossberg 12 gauge bolt action, clip, C Select choke
Remington model 1100, Semi Auto, 12 gauge, 2 ¾", SN 109090V
Winchester model 290, .22 short/long/long rifle, tube fed, semi auto, SN 422722

Oilfield Equip./Supplies:

Pipe and rod racks
Redi pump spooler
Insert pump, 2 X 1 ½ X 14
1 ¼ sinker bars
1 ¼ polish rods
Dead men
Casing bales
Numerous double sheave tubing blocks
Wood timbers
Dual completion packers
Fishing tools
4' up to 10' rod subs, 7/8" & ¾"
Mud anchors
Tie down rig stakes
5 ½" & 3 ½" weight pipe
Assorted tubing, 2 ½" and 2 3/8"
Lower sections of rig poles
7" baler
100 +/- sticks of structural sucker rod
120 +/- sticks of sucker rod
60 +/- joints of 2 3/8" fiberglass tubing
15 +/- joints of 2 3/8" seal tight tubing
100 +/- structural tubing

2 - Complete 8 X 10 pole
5 ½" & 3 ½" balers
4 ¼" & 3 ¼" sand pumps
Wind blocks
Redi line reel
Drum brakes
Pickles
Elevators
Sheaves
Hydraulic pumping unit
2 - 42" I beams
Blocks
30" tube bales
Spiders
Orbit valves
Casing heads, 4 ½" to 5 ½"
Spoils of cable
Sand pump bottoms
Casing bits
Head slips
Shoes
Franks Box
Swabs
Hammer unions
Spider bowls
Chain tongs
Rod hooks
Connections
Polish rod clamps
Bits
Packers production
Swab hoses
Flow T's stuffing box
Line wrenches
Tongs
Pump push rods for 4 X 6 & 4 X 8
Mud mix hopper

And much more

Engines:

Hand crank 4 Cyl motor
Mud pump transmission
692 Detroit motor

2 - Waukesha motors
5 X 8 Gardner Denver mud pump (parts)
6V92 Silver Detroit motor w/ 13 spd. Eaton Transmission
International motor

Antiques:

Cream separator
Enterprise sausage presses
Walk-behind cultivators

Stoves
Maytag motor
Cast iron boiler
Cast iron bean pot
Gas cans
Simplex jacks
Lanterns

Office Equipment:

Wood doors
Cabinet doors
Filing cabinets

Admiral refrigerator
Microwaves
Shelves
2 recliners
Office chairs
Office supplies
Numerous desks

Shop Tools/Supplies:

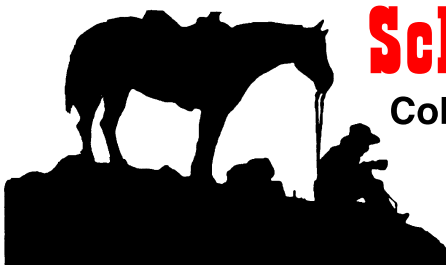
Fuel tanks
Chain link fence and gates
Numerous tires and rims
Tool boxes
Shop wood stove
Propane bottles
3 trailer house axles
5- 3500 lb. axles
Hyd. cylinders
Protech drill press
Scaffolding
Shop stools
Miller 180 SD welder
Hotsy pressure washer, diesel burner
Cutting torch
Ramco cherry picker
Log splitter
Oil, anti-freeze, hyd oil drums
Heat Buster shop fans
Tire cage
Tire machine
Weed burners
Tarps
Load binders
Chain
Vice grips
Receiver hitches
Grease guns
Power tools
Numerous containers of hardware and parts
¾" socket sets
Adjustable wrenches
Pipe wrenches
Reamers, threaders
Ammo boxes
Port a power
Come a long
Milwaukee grinder
Bench grinders
Braces, bits
Screwdrivers, nut drivers, chisels, punches
Oil saver pumps
Gosiger Dayton drill press, 2 speed transmission
Cable cutters
Bottle jacks
Skil cut off saw
Ramco Industrial press, 55 ton
Metal storage cabinets
Portable Multi Power air compressor, 5.5 hp. Eng.
Numerous work benches
A Frame w/2-ton hoist
Drop cords
Ladders
10" radial arm saws, DeWalt and Craftsman
Schumacher battery charger
Car ramps
Ratchet straps
Mills
Sockets, wrenches, pry bars, hammers, sledges, and more
Craftsman tool box and cabinet
2 Lincoln cracker box welders
3- smaller generators
Band saw
Air bubbles

And more ...

Auctioneer's Note: If it was used in the oil field, Arnold had it! This will be a very large auction; we will probably be running two rings so come prepared. Arnold's shop is very full and we will find more items not listed once we start putting items on trailers, come see what treasures we uncover.

-Thanks Jason

Visit: www.schneiderauctionservice.com for more color photos.



Schneider Auction Service

Col. Jason Schneider, Auctioneer

Assisting Auctioneers:

Col. Dusty Schneider Col. John Kisner

785-650-BIDD (2433) Box 114, Schoenchen, KS 67667



**Like Us On
Facebook!**



Terms & Conditions: Cash - Approved Check W/Positive ID -Nothing removed Until Settled for - All Items Will be Sold "As-Is Where-Is" - Not Responsible for Accidents or Theft - Announcements Made Day of Sale Take Precedence Over Printed Material.
Credit Cards accepted: There will be a 4% Buyers Premium charged on all credit card purchases.

Castle Rock Printers Inc. - Quinter, KS