

Online,
Absentee, Phone
and Limited Onsite
Bidding

Rescheduled Huge, Henning, MN Area
- RANCH RETIREMENT -

Very Clean Line
of Well Maintained
Farm Equipment

Livestock
Equipment and
Supplies

AUCTION

Aluminum
Stock Trailer,
Trucks

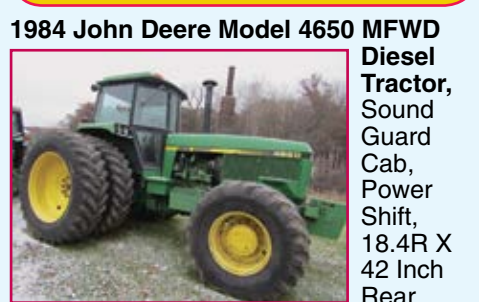
As we have decided to fully retire from farming, we will sell the following at auction located ½ mile west of Henning, MN on MN State Highway 210, then 2 miles south on County Road #65, then 1/10th mile east on County 134, then ½ mile south on Sidewinder Road to Farm #21448. Follow the Mid-American Auction Co. signs; roads will be plainly marked.

SATURDAY, JUNE 20, 2020

SALE TIME:
10:30 A.M.

Boser's Lunch Wagon

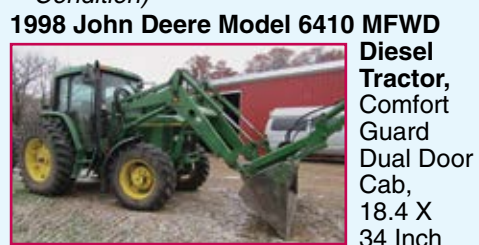
Tractors



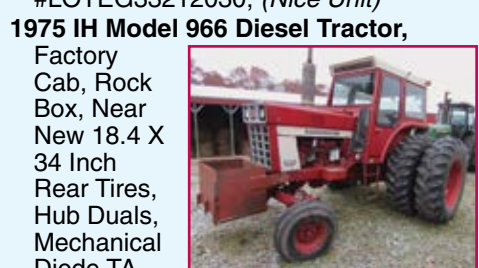
1984 John Deere Model 4650 MFWD Diesel Tractor, Sound Guard Cab, Power Shift, 18.4R X 42 Inch Rear Rubber, Hub Duals, 18.4 X 25 Inch Front Rubber, 3-Point, Triple Hydraulic Remotes, 1000 PTO, 13 Front Suitcase Weights, Inside Rear Wheel Weights, Quick Hitch, Shows 7000 Hours with Approx. 1000 Hours on Engine Overhaul, Ser. #RW4650P009467, (Nice Condition)



2003 Case IH Model JX90U MFWD Diesel Tractor, Dual Door Cab, Air, Heat, Radio, 18.4 X 34 Inch Rear Tires, 380-70R-24 Inch Front Tires, Front Fenders, Dual Hydraulics, 540/1000 PTO, PS/Sync Transmission, LH Reverser, Shows 2937 Hours, One Owner, Ser. #001281307, (Excellent Condition)



1998 John Deere Model 6410 MFWD Diesel Tractor, Comfort Guard Dual Door Cab, 18.4 X 34 Inch Rear Tires, Hub Duals, Mechanical Diode TA, 3-Point, Dual Hydraulics, 540/1000 PTO, Shows 5897 Hours with Approx. 1000 Hours on Engine Overhaul, Ser. #2510187U029133, (Very Nice Condition)



1975 IH Model 966 Diesel Tractor, Factory Cab, Rock Box, Near New 18.4 X 34 Inch Rear Tires, Hub Duals, Mechanical Diode TA, 3-Point, Dual Hydraulics, 540/1000 PTO, Shows 5897 Hours with Approx. 1000 Hours on Engine Overhaul, Ser. #2510187U029133, (Very Nice Condition)

John Deere Combine, Windrower & Heads



1987 John Deere Model 6620 Titan II Hydro Diesel Combine, Chopper, 24.5 X 32 Inch Drivers, (Jim purchased this combine from the original owner. Always shedded. Shows just 2462 pre-harvest hours, Very Clean Combine), Ser. #H06620X620637

John Deere Model 918 Bean Head, Poly Snouts, Hyd. Fore and Aft, Ser. #H00918F660644, (Nice Condition)

John Deere 444 4RW Corn Head
John Deere 5 Belt Pickup Head, Ser. #228411, (Nice Condition)

Good Two-Wheel Shop Built Header Trailer with Light Kit
Shop Built Swather Trailer

NOTE: Jim and JoAnn have successfully ranched on this ranch for 51 years, now due to Jim's health they have decided to fully retire and sell their farm equipment and ranch supplies at auction. Mid-American Auction Co. is very pleased to be selected to conduct the Reineke's ranch retirement auction. Jim and JoAnn have been involved in the beef industry for many years producing Black Angus seedstock and superior market topping feeder cattle. They are well known in the area as good friends and neighbors and for the way they maintained their livestock and farm equipment. All major pieces have been shedded with several pieces purchased new from local dealers. Manuals available on nearly every piece of equipment. We will begin with a few miscellaneous items, then livestock equipment, farm machinery, trucks, trailers, and tractors. Please plan on prompt attendance as we will begin on time. We encourage you to participate online, or with pre-approval by absentee bidder form or phone on major items. Online bidding provided by Proxibid. For tutorials on registration and online participation, please go to www.midamericanauctioninc.com. However, if you are planning on attending the auction in person you must adhere to strict social distancing guidelines and follow suggested practices to ensure the safety of everyone. Prior inspection welcome by appointment. Phone Jim at (218) 583-2243. If you enjoy good clean ranch retirement auctions with a wide variety of good clean items, please mark this date on your calendar and make plans to participate in the Reineke ranch retirement auction. **Thank you!**

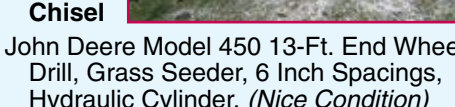
Planting & Tillage Equipment



John Deere Model 2210 22-Ft. Hyd. Fold Field Cultivator, Knock-Off Shovels with Tool, 3 Bar Harrow, Walking Tandems, Extra Shovels, One Owner, Ser. #L000527



John Deere Model 635 20-Ft. Hyd. Fold Cushion Gang Tandem Disc, Dual Wheels, Down Pressure, 3 Bar Harrow, Ser. #635X000365, (Nice Condition)



Wilrich Model R-220 14-Ft. Cushion Gang Off-Set Disc, One Owner, (Nice Condition)

John Deere Model 610 17 Shank Disc Chisel

John Deere Model 450 13-Ft. End Wheel Drill, Grass Seeder, 6 Inch Spacings, Hydraulic Cylinder, (Nice Condition)

John Deere Model 700 4RW Corn Planter, Dry Fertilizer, Bean Cups, Newer Fertilizer Augers, Monitor

White Model 508 Variable Width 5-Bottom Semi-Mount Spring Reset Plow, Coulters, New Lays

Melroe Model 453 36-Ft. Multi-Weeder

Melroe 40-Ft. Harrow on Fold-Back Cart

John Deere Model 825 4-Row Wide Danish Tooth 3-Point Cultivator

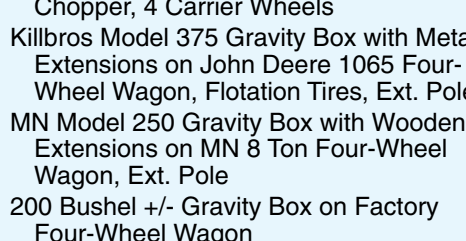
Grinder Mixer, Manure Spreader, & General Farm Machinery



New Holland Model 355 Grinder Mixer, Folding Auger, Magnet, Extra Screens, (Nice Condition)



Gehl Model 1287 Tandem Axle Manure Spreader, Poly Floor, Upper Beater, Hyd. Endgate, One Owner, Ser. #5668, (Good Condition)



New Idea Model 324 Two-Row Wide Corn Picker, (Jim is the Second Owner)

John Deere Model 27 14-Ft. Stalk Chopper, 4 Carrier Wheels

Killbros Model 375 Gravity Box with Metal Extensions on John Deere 1065 Four-Wheel Wagon, Flotation Tires, Ext. Pole

MN Model 250 Gravity Box with Wooden Extensions on MN 8 Ton Four-Wheel Wagon, Ext. Pole

200 Bushel +/- Gravity Box on Factory Four-Wheel Wagon

Lorenz 7-Ft. Double Auger 3-Point Snowblower, Hydraulic Spout

Owatonna Model 205 40-Ft. Crop Elevator, Truck Hopper, Down Spout

8 Inch X 30 Ft. Hutchinson PTO Auger

6 Inch X 30 Ft. Hutchinson PTO Auger

Shop Built 3-Point 75 Gallon Boomless Sprayer with Hand Wand

Rhino 3-Point Post Hole Auger with 12 Inch Auger, One Owner

3-Point Post Hole Auger with 8 Inch Auger

Crowding Tub, Scale, Feed Wagons & Good Livestock Equipment



Real-Tuff Portable Crowding Tub and Chute, Full Squeeze Chute, Palp Cage, Self-Locking Head Gate, Adjustable Crowding Alley, Tub, on Transport Wheels, (Nice Unit)

16-Ft. Portable Loading Alley Heavy-Duty Calving Pen with Self-Locking Head Gate and Crowding Gate on Skids

Ark-Felt Portable Livestock Scale, Beam with Dial Read-Out

Harms Built 30-Ft. Tricycle Front Bunk Feeder Wagon

20-Ft. Notch Tricycle Front Bunk Feeder Wagon

20-Ft. H&S Tricycle Front Bunk Feeder Wagon

250 Bushel +/- Bottom Unload Bulk Feed Bin with Auger



4-Wheel Shop Built Gate Trailer with Several Interlocking Gates

(10) Hi-Qual 10-Ft. Interlocking Corral Panels, (1) 10-Ft. Hi-Qual Corral Panel with Walk-Through Gate

Several Interlocking Corral Panels, Includes 12-Ft. Hi-Qual

21 Ft. X 11.5 Ft. Portable Calf Shelter on Skids

(2) Approx. 200 Bushel Calf Creep feeders on Transports with Double Tip-Down Sides

(2) Rangeland 20-Ft. Metal Feed Bunks

(2) Shop Built 10-Ft. Metal Feed Bunks

(2) Shop Built 6-Ft. Metal Feed Bunks

Remote Barn Camera System with TV Monitor

Zareba 15 Jewel Electric Fencer

Pistol Grip Syringes Taggers

Calf Puller OB Chains Tattoo Kit

Fuel Barrels, Tools & Miscellaneous Items

1000 Gallon Fuel Barrel with Gas Boy Electric Meter Pump

500 Gallon Fuel Barrel with Gas Boy Electric Meter Pump

Several Good 9L X 15 & 9L X 14 Inch Tires and Rims

4 Inch X 10 Ft. Auger and Electric Motor Misc. Jacks Misc. Tools

(3) Wire Corn Cribs with Roofs from 1000 to 1500 Bushel

Shop Built PTO Saw Rig

18.4 X 30 Tire Chains

18.4 X 34 Inch Tire Chains

Several New and Used 11L X 15 Tires and Rims

Handyman Jack 20 Ton Hyd. Jack

Open and Box End Wrenches, up to 1.25 Inches

(2) Older Table Saws Log Chains

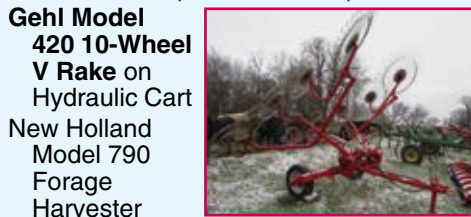
Sets of Good 18.4 X 34 and 18.4 X 30 Inch Tractor Chains

110V-220V Gas Powered Generator

Hay & Forage Equipment



Gehl Model 2480 Twine Tie Round Baler, Variable Open Throat, Auto Electric Tie, Crowding Wheels, Bale Push Off, One Owner, Ser. #26990, (Nice Condition)



John Deere Model 735 11.5-Ft. Hydra Swing Disc Style Mower Conditioner, Yoke Hitch, 7 Turtles, One Owner, (Nice Condition)

Gehl Model 420 10-Wheel V Rake on Hydraulic Cart

New Holland Model 790 Forage Harvester with New Holland 824 Two-Row Low Profile Adjustable Corn Head, New Holland 5-Ft. Hay Head, Ser. #759398, (Nice Condition)

John Deere 714A 14-Ft. Forage Box on JD 1065 Four-Wheel Wagon, Ext. Pole, (Nice Condition)

8 X 25 Ft. Wooden Bale Rack on MN 10 Ton Four-Wheel Wagon, Ext. Pole

8 Ft. X 20 Ft. Wooden Bale Rack with Bale Stops on Shop Built Four-Wheel Wagon

16-Ft. Wooden Flat Rack on MN 7 Ton Four-Wheel Wagon

Lorenz 13-Ft. Forage Box with Bunk Extension on John Deere 1065 Four-Wheel Wagon, Ext. Pole

(2) Rear Unloading Power Boxes on Four-Wheel Wagons

Shop Built 3-Point Bale Spear

MN 7 Ton Four-Wheel Wagon with Older Wooden Flat Rack

2000 Four Star 7 Ft. X 24 Ft. Tandem Axle Aluminum 5th Wheel Stock Trailer, Poly Vent Inserts, 7-Ft. High Interior, Center Gate with Slider, Full Rear Endgate with Slider, Spare Tire and Rim, (Nice Condition)

1995 Ford 350 One Ton XL Four-Wheel Drive Pickup, Single Rear Wheels, Lock-Outs, Gas V8, Long Box, Regular Cab, 5th Wheel Ball, Electric Brake Control, Shows 103,000 Miles

1960 Chev C60 Two-Ton Truck, 13-Ft. Wood Grain Box and Hoist, 6 Cylinder Gas, 4 Speed

Westfield 6 Inch X 14 Ft. Folding Hyd. Drill Fill Auger

1973 Polaris SS 340 Colt Snowmobile, Air Cooled, One Owner

LOST ACRES FARM

JIM & JOANN REINEKE, OWNERS

21448 Sidewinder Road,
Henning, Minnesota
Ph. (218) 583-2243

MID-AMERICAN AUCTION CO., INC.

COLS:

AL WESSEL - LIC. NO. 77-60
PH. 320-547-2206 (Sale Day: 320-760-2979)

KEVIN WINTER - LIC. NO. 77-18
PH. 320-352-3803 (Sale Day: 320-760-1593), AUCTIONEERS



TERMS: CASH or GOOD CHECK. No credit or debit cards. If credit is desired, make arrangements with your credit agent prior to sale. Out of area buyers please have letter of credit. Purchases in excess of \$5,000 must be accompanied with a bank letter of credit. Titles on all titled items will be processed once checks have cleared purchaser's bank. Everything sold as is, no warranties given or implied. Nothing removed until settlement has been made. While we believe everything stated hereon to be correct as to age and description, anything stated day of sale by owners or auctioneers will take precedence over all printed materials. Owners, auctioneers, clerks or their helpers are not responsible for accidents. All information stated hereon is provided by the owner, Mid-American Auction Co., Inc. makes no warranty as to its accuracy.

MID-AMERICAN AUCTION COMPANY, INC.
Celebrating 49 Years of

Professional Service with Proven Experience

www.midamericanauctioninc.com