

Clean
JD Tractors &
Farm Equipment

Afternoon Long Prairie/Grey Eagle, MN Area
~ MOVING ~

JD
Lawn Tractor
& Attachments

AUCTION

As we are selling our hobby farm and moving to town,
we will sell the following at auction located 6.5 miles southeast of Long Prairie, MN or 6¾ miles northwest of Grey Eagle, MN on MN State 287, then 1.5 miles east on County #13 or 5.5 miles northwest of Burtrum, MN on County #13 to Farm #29833. Follow the Mid-American Auction Co. signs; roads will be plainly marked.

Friday Afternoon, July 10, 2020

AUCTIONEER'S NOTE: After many years of living in the country, Frank and Julie have decided to sell their hobby farm and move to town. The Beckers are well known as great friends and neighbors as well as for the care and maintenance of their home and personal property. Prior inspection of larger items welcome by appointment. Please note the 4:00 p.m. starting time and make plans today to attend this exceptionally clean auction. *Thank you!*

Sale Time: 4:00 p.m.
Boser's Lunch Wagon

Collectible John Deere Tractors & Farm Machinery



1951 John Deere Model G Tractor, Roll-O-Matic, Good 13.6 X 38 Inch Rear Tires, 6 Speed Hi-Lo, Power Trol with Snap Couplers, Original Power Trol Plugs Included, Nice Metal, Runs Good, Sells with John Deere #45 Trip Bucket Loader, Manure Bucket with Snow Extensions, Older Restoration, Ser. #53355

John Deere 10 Ft. KBA Wheel Carry Disc
King Kutter 5-Ft. Pull-Type Brush or Grass Mower
John Deere 12 Ft. Hydraulic Lift Field Cultivator
IH #60 3 X 14 Inch Pull-Type Trip Beam Plow, (Nice Condition)



1948 John Deere Model A Tractor, Roll-O-Matic, Power Trol with Snap Couplers, 13.6 X 38 Inch Tires, Good Metal, Runs Good, Sells with Two-Row Mounted Cultivator, Ser. #619929

Harms Four-Wheel Wagon, (Wagon Only)
Lely 3-Point V Type Snowblower
John Deere Model 290 Two-Row Corn Planter, (No Fertilizer Boxes)
MN Model 110 PTO Manure Spreader, One Owner, (Needs Wood Replacement)
4 Section Spike Tooth Harrow with Evenner

Tools & Miscellaneous Household

Tools & Misc. Items

LB White 60,000 BTU
Hanging LP Heater
Fiberglass 31 Ft.
Extension Ladder
Louisville 24 Ft.
Aluminum Extension
Ladder

Craftsman 10"
Radial Arm Saw,
(Nice Condition)

4 Inch Shop Vise
5 Speed 13 mm Bench Top Drill Press
Newer NAPA 3.5 Ton Floor Jack
Lincoln 225 Amp AC Welder (Earlier Unit with Copper Wiring), (Good Condition)
300 Gallon Fuel Barrel and Stand
220V Electric Heater
Manual Tire Changer
H.D. 12 Ft. Camper Electrical Cord
Bird House
Several Good Log Chains



Wheelbarrow
Car Ramps
55 Gallon Poly Barrels
Approx. 75 Steel T Posts
Live Trap
Fuel Cans
Machinery Jack

Household & Collectibles

Older Oak Side Tables
Bull Horns
Several Boxes of Misc. Household Items and Numerous Related Items
(2) Patio Sets

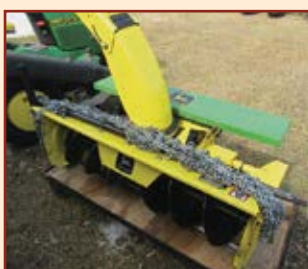
Clean John Deere Riding Lawn Tractor & Outdoor Equipment

John Deere Model 445 Hydrostatic Lawn Tractor, Wheel Weights, 2 Spool Side Bank Hydraulics, Sells with 54 Inch Mower Deck, John Deere MC519 Cart and Power Flow Bagger, 990 Hours with Approx. 200 Hours on Engine Overhaul, (Very Nice Condition)



John Deere 46 Inch Front Mount PTO Driven Snowblower with Hydraulic Lift and Spout, (Nice Condition)

Set of Tire Chains that fit 445
Agri Fab 10 Cu. Ft. Dumping Yard Cart for ATV or Lawn Mower
12 Volt or 110 V Refrigerator/Cooler



Porter Cable 35,000 Watt Generator with Honda 6.5 H.P. Gas Engine, with Cover, (Like New)



Craftsman 18 Inch 208 cc Rear Tine Garden Tiller, (Has had little use, Nice Condition)



5 X 5 Ft. Portable Fish House
Set of Newer Aluminum ATV Ramps
30 Gallon ATV Sprayer, Boom and Hand Wand
10.5 Ft. Circular Fishing Shelter
(2) Shop Built Deer Stands on Four-Wheel Wagons
Jiffy Gas Powered Ice Auger
Ice Otter Fishing Sled
Fish House Stove & Miscellaneous Winter Fishing Items
Horseshoe Set
30 lb. Propane Cylinder

Utility Trailers

2011 6.5 Ft. X 12 Ft. Single Axle Utility Trailer, Mesh Rear Ramp as well as Mesh Side Ramp, 2 Inch Ball, 205/750 X 15 Tires, Spare Tire and Rim, (Like New)

Nice Shop Built 5 Ft. X 8 Ft. Tilting Utility Trailer
205/750/15 Trailer Tire and Rim
Smaller Boat or Trailer Spare and Wheel



Frank & Julie Becker, owners

PHONE (320) 360-9874 | 29833 COUNTY 13 | BURTRUM, MN

MID-AMERICAN AUCTION CO., INC.

COLS. AL WESSEL - LIC. NO. 77-60
PH. 320-547-2206 (Sale Day: 320-760-2979)



KEVIN WINTER - LIC. NO. 77-18
PH. 320-352-3803 (Sale Day: 320-760-1593), AUCTIONEERS



TERMS: CASH or GOOD CHECK. No credit or debit cards. If credit is desired, make arrangements with your credit agent prior to sale. Out of area buyers please have letter of credit. Purchases in excess of \$5,000 must be accompanied with a bank letter of credit. Titles on all titled items will be processed once checks have cleared purchaser's bank. Everything sold as is, no warranties given or implied. Nothing removed until settlement has been made. While we believe everything stated herein to be correct as to age and description, anything stated day of sale by owners or auctioneers will take precedence over all printed materials. Owners, auctioneers, clerks or their helpers are not responsible for accidents. All information stated herein is provided by the owner, Mid-American Auction Co., Inc. makes no warranty as to its accuracy.

MID-AMERICAN AUCTION COMPANY, INC.

Celebrating 49 Years of Professional Service with Proven Experience

www.midamericanauctioninc.com

Range Printing (320) 632-6627