

Clifford Atkerson Estate AUCTION

**Sellers: Clifford Atkerson Estate;
Craig Atkerson and Cristy Dinkel**

Sat., July 25, 2020 - 10 a.m.

Location: 3099 188th Street, Russell, KS

From I-70 / Hwy 281 at Russell, KS, go 10.5 miles South on Hwy 281 to Michaelis Rd, then 2.5 miles East to 188th St. to auction site.

From Hwy 281 / K 4 junction go 12 miles North on Hwy 281 to Michaelis Rd, then 2.5 miles East to 188th St. to auction site.

Lunch stand available by Jen's Concessions

Real Estate will sell August 23, 2020 at 3 pm

Sellers: Craig Atkerson and Cristy Dinkel

Location: 510 E 2nd Street, Russell, KS

Legal Description: Laing and Beardsley's Addition, Block Six (06), Lots Eight (8) and Nine (9), Section Twenty-six (26), Township Thirteen (13), Range Fourteen (14) West of the 6th P.M.

Home General Description: This 1,856 sq. ft. brick home has 3 bedrooms, 3 baths, full basement, central heat and air, double car attached garage, plus a 22' X 16' detached garage, sitting on a corner lot. The property is on city water, utilities and sewer. This home was built in 1973 and has a fenced in back yard. It would make a great starter home or retirement property. GE built in microwave, GE glass top range, Whirlpool refrigerator, KitchenAid dishwasher, Kenmore compactor are all included along with a Rheem water heater and Carrier central heat/air. This home recently had a gas fireplace insert installed. Don't pass up this on auction day!

Terms, Taxes, & Title Insurance: Ten percent (10%) down day of sale, balance due upon closing. This auction sale is not contingent upon the purchaser's ability to finance the purchase. Buyers must make finance arrangements, if needed, prior to the auction. Seller shall pay all the 2019 taxes and prior year taxes. 2020 taxes shall be prorated to date of closing and subsequent years taxes shall be the responsibility of the Buyer. 2019 taxes were \$3,392.72. Title insurance shall be used to prove clear and merchantable title with the Buyer & Seller sharing equally the owner's policy expense. The mortgagee's policy, if required, will be the expense of the buyer.

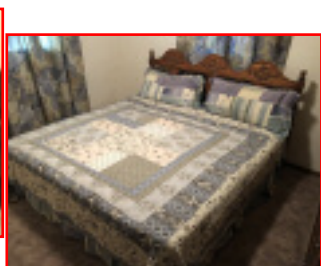
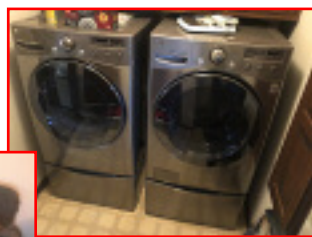
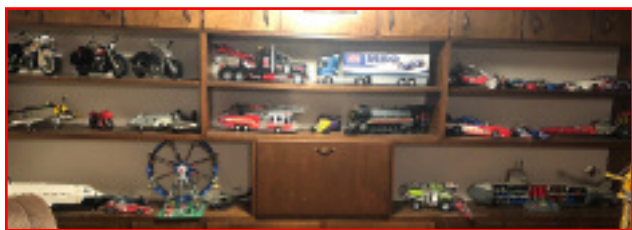
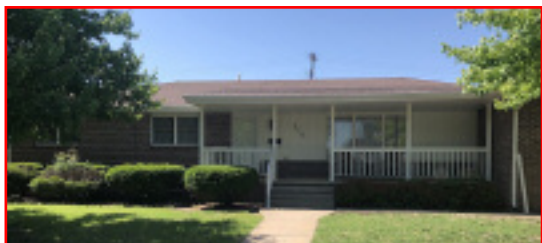
**An open house for this property will be
Sunday, August 16, 2020 at 3:00 p.m.**

To view this property please contact Jason to make arrangements.

This Real Estate is selling under the firm of Hamit Land & Auction Inc.

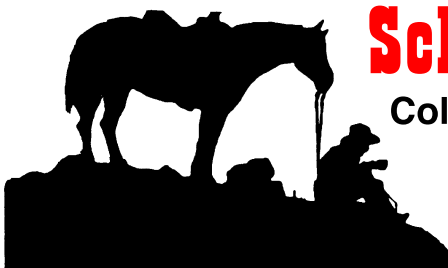
Jason W. Schneider, Salesperson 785-650-2433

Donald L. Hamit, Broker 888-573-6585



Auctioneer's Note: This auction will feature some very nice furniture and clean household items along with a nice selection of shop equipment. We will be selling a very unique LEGO collection. We will have the auction set up in a building so hopefully we can keep everyone out of the sun and have a great auction. See you at the auction!
-Thanks Jason

Visit: www.schneiderauctionservice.com for more color photos.



Schneider Auction Service

Col. Jason Schneider, Auctioneer

Assisting Auctioneers:

Col. Dusty Schneider Col. John Kisner

785-650-BIDD (2433) Box 114, Schoenchen, KS 67667

Pickup/Tractor/Equipment:

2002 Ford F350, VIN FTSW31S02EC24495, Triton V10 Eng., 4 door, 4X4 w/lock out hubs, 373 rear-end, 312,600 miles, electric locks & windows, fifth wheel, tool box

1983 John Deere 2350, SN. G480382, 2,681 hrs., 3 point, PTO, top shaft synchronized trans., w/245 JD loader

18 foot Belshe fifth wheel trailer, LED lights, tow hooks, 7,000 lb. axles, ramps

8 foot John Deere 3 point back blade, hyd. angle Landpride RC2672 rotary mower

Bush Hog 5 foot rotary mower

Driveway drags



Shop Equipment:

Bad Boy Outlaw zero turn mower, 177 hrs., 61" deck, Kawasaki Eng.

John Deere lawn cart

Craftsman snow blower

Stihl string trimmer

Snapper push mower

Drop cords

Ladders

Gas cans

Wheelbarrow

Shovels, rakes, hoes, and more

Golf clubs

Levels, squares

Fertilizer spreader

Tow ropes

Craftsman tool chest

Work benches

Golden rod fence stretcher

Fuel tank w/split compartments

Winpower 20KW generator, PTO driven on trailer

Whitco pressure washer

Chicago bench grinder on stand

Jepson 7" angle grinder

Hammers, screwdrivers, wrenches, punches, chisels

Pliers, vice grips, socket sets, impact sockets

Milwaukee boom box

Solar battery charger

Port a matic air lift

Creeper

Shop lights

Peterbilt truck seat

20 ton press

Continental 8 speed drill press

Amrox bandsaw

Reddy & Farm King heaters

Cherry picker

A frame w/Yale chain hoist

Transmission jack

Maxx air shop fan

Floor jack

Barrell stands

2- Craftsman 16 gallon shop vacs

Parts washer

Chains and boomers

Ratchet straps Oxy Acet torch set

Air bottle jack Metal shelving

Metal storage cabinets

2-500 gallon fuel tanks on skid w/pumps

Numerous boxes of hardware

Numerous boxes of pipe fittings, misc. parts, filters, and more

CJ 7 4 speed transmission

9.00 R 20 truck tires and rims

Misc. truck tires

Motorola CB base stations



Antiques/Collectibles:

Lego sets; 50 +/- sets completed w/manual, some NIB

Trunk LP records

8 track tapes Sewing chair

Sewing machine

Electra juke box, works great

Childs wagon

Royal Elegance China set

Carnival glass

Vintage paymasters

Costume jewelry

Las Vegas coins

Knives

Shriners rocks

Shriners weather vane

Mirro pastry press

Beaded purse Kitchen scale

Cap collection

Red Lobster glasses

Vintage service manuals

1941 Abe Lincoln w/authentic papers

Dazey #60 butter churn

Coleman lanterns

Belt buckles

Coors Light mini kegs

General Household:

Sony VCR

Sony Blue Ray player

DVDs

Decorations, wall hangings

Glasses, stem ware, mugs, Thermos

Corel ware plates and bowls

Tupperware

Coffee pots

USPS scale

Office supplies

Dell computer, printer/fax and speakers

Crown Royal bags

Luggage

Dyson vacuum

Games

Linens, blankets, sheets, towels

Toaster, blender, mixer

Vacuum sealer

Copper pots

Corning ware

Cookware, pots, pans

Ginsu knives

Flatware, kitchen utensils

Cook books Pet taxis

Water jugs Crock pots

Christmas decorations

Knick knacks

Hoover vacuum

Yarn and craft items

T- Fal deep fryer

Sporting Goods:

Size 8 Muck boots, New

Fishing rods

Gun cleaning kits

Pool cues

PW reloader, 12 gauge, ext.

shot tube, bushings and more

Reloading supplies; shot, wads, boxes, primers, hulls, and more

Shot gun shells

Magazines/clips

Furniture:

La-Z-Boy micro fiber recliner

Micro fiber rocker/recliner

Sectional couch

Mitsubishi 46" TV

Berkey & Gay dining room set; sideboard,

cabinet/buffet, & table w/pull out leaves and 8 chairs

End tables

2 swivel rockers

5-4 drawer filing cabinets

4 office desks

2-2 drawer filing cabinets

Office chairs

Vizio 32" TV

King size bedroom set; bed, dresser w/mirror and chest of drawers, night

stand

King size bedroom set; bed, dresser w/mirror

Floor lamps

LG washer and dryer w/pedestals, 2011 models

Step stools

Wire shoe shelves

Blonde dresser w/mirror

Full size bedroom set; bed, dresser w/mirror

2-La-Z-Boy rocker recliners

Blue sofa w/recliners on end

Lamp table

Full size bedroom set: bed, chest of drawers, dresser

2-entertainment/TV stands

Kenmore shop fridge

Porch swing

Legacy BBQ grill

Like Us On

Facebook!



Terms & Conditions: Cash - Approved Check W/Positive ID -Nothing removed Until Settled for - All Items Will be Sold "As-Is Where-Is" - Not Responsible for Accidents or Theft - Announcements Made Day of Sale Take Precedence Over Printed Material.

Credit Cards accepted: There will be a 4% Buyers Premium charged on all credit card purchases.