

# AUCTION EXCELLENT ESTATE LARGE FARM EQUIPMENT Thursday, August 13, 2020 @ 10:30 AM

**Location: 4018 Taft Ave, Primghar, IA 51245. From the east edge of Primghar, IA go 3 miles east on Blacktop B-40 AKA 390th St and 1 1/4 miles south on Blacktop L-54 AKA Taft Ave. Auction signs will be posted.**

## Tractors, Loader & Accessories

- 2012 Case IH 290 Magnum MFWD tractor, duals on the front and rear, 380/85R 34 fronts and 18.4R 46 rears, quad hyd, 656 hours, has big 1000 PTO, 3-pt with quick hitch, excellent condition, SN 4875 **LOT 31**
- 2013 Case IH 235 Magnum MFWD tractor, 1553 hours, luxury cab, guidance system, 380/85R 34 fronts, 18.4x46 rear tires with duals, quad hyd, 3-pt with quick hitch, big 1000 PTO, excellent condition, SN 02044 **LOT 32**
- 2007 John Deere 6430 Premium 2-WD tractor, 2243 hours, has 18.4 x 38 rear rubber, quad hyd, power beyond, rear wheel weights, has left hand reverser, buddy seat, excellent condition, one owner **LOT 33**
- Westendorf TA-28 Plus traction action loader and brackets for 6430 tractor, has 8' bucket, excellent condition (will be sold separate from John Deere 6430) **LOT 34**
- 1974 Case Agri-King 970 2-WD tractor, has Westendorf WL-40 loader and quick tach 7' bucket, dual hyd, 3-pt, power shift, 6421 hours **LOT 35**
- Quick tach 9' loader bucket **LOT 36**
- Quick tach bale spear **LOT 37**
- 3-pt bracket with 10) front weights

## Semi & Grain Trailer

- 1997 Freightliner day cab semi, 136,530 miles, auto trans, in 2008 had a rebuilt Cummins diesel engine put in, VIN 1FUWHLBA0VL775911 **LOT 29**
- 2011 Maurer 24' steel single hopper grain trailer with Shur-lock roll tarp **LOT 30**

## Planter

- John Deere 1760 12-row 30" hyd front fold vac Max-Emerge XP planter has 20/20 Airforce Precision planting, 20/20 Seed Sense, 3 bu boxes, trash whippers, down tubes, Precision seed meters, Precision Globe, excellent condition, one owner **LOT 17**

## Vertical Tillage Machine

- 2014 Kuhn Krause Excelsator 8000 vertical tillage machine, 25' with rolling basket, teeth roller, coulter blades, cushion gang, excellent condition, one owner **LOT 24**

## Field Cultivator

- 2015 Case 200 Tiger Mate hyd fold field cultivator with 2-tine drag and roller baskets, 30' has oscillating tandems, excellent condition **LOT 23**

## Disk Ripper

- 2016 Case 527 B Ecolo-Tiger 5-shank disk ripper, with rear disk covers **LOT 22**

## Disk

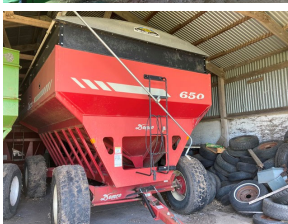
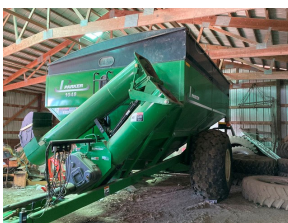
- 2013 Case 340 25' cushion gang disk with 3-tine drag, tandem wheels on the wings, excellent condition **LOT 21**

## In-Line Ripper

- John Deere 2100 7-tooth In-Line ripper with coulters and gauge wheels, one owner **LOT 20**

## Vehicle

- 2014 Buick Lacrosse 4 door auto, under 90,000 miles, leather interior **LOT 38**



## Sprayers

- 2011 Top-Air TA-112 Sprayer, has tractor tires, 90' hyd booms, inductor tank, has top air flow control Master monitor with Command Center II monitor **LOT 15**
- 3pt 300-gal poly tank sprayer with booms, has Raven SCS 330 controller
- 1500 gal poly tank with gas motor transfer pump and hose
- 300 gal fiber glass sprayer on 2-wheel pull type cart

## Grain Cart

- 2012 Parker 1048 grain cart, with roll tarp, big 1000 PTO, In-Line auger **LOT 16**

## Grain Head Carts

- Harvest Hand 25' head cart, 2-front wheels, single wheel in the rear **LOT 7**
- PK head cart, dual axle, 32' **LOT 6**
- Older head mover gear

## Wagons

- Demco 650 bu gravity wagon, 445/65R 22.5 tires, Shur-lock roll tarp, red **LOT 11**
- Parker 550 gravity wagon 550 bu with big truck tires on Parker gear, 42.5/65R 22.5 rubber **LOT 12**
- Minnesota 275 bu gravity wagon with Westendorf 2416 gear with 65R 22.5 tires, good condition **LOT 13**
- Demco 325 bu gravity wagon, red with white top 295/75R 22.5 tires **LOT 14**
- Bradford 275 bu gravity wagon on Bradford 8-ton gear
- Dakon 250 bu gravity wagon on Westendorf 8-ton gear
- Bradford 250 bu gravity wagon on Bradford 8-ton has hyd orbit drive Sudenga seed auger
- 3) Auto quick hitches for gravity wagons

## Skidloader, Accessories and Trailer

- 1999 Mustang 2040 40 hp diesel skid loader, has 72" bucket, foot controls, 1211 hours **LOT 25**
- Skid loader pull type 5.5'x8' tandem axle trailer **LOT 28**
- Bale Spear **LOT 27**
- Pallet forks **LOT 26**

## Trailers & Flatbeds

- 2019 PJ pull type steel dump trailer, 7'x16', near new, excellent condition, VIN 4P5DL1420K1307228 **LOT 5**
- 2016 Aluma 6.5'x10.5' aluminum 2 wheel utility trailer with ramp, excellent condition, VIN 1YGUS1018HB155648 **LOT 4**
- 8'x16' flat bed with 2" bed on older John Deere gear
- 14' older wooden flat bed with 2" bed on older New Idea gear
- 8'x15' steel bed flat bed with steel mesh back has older running gear, needs work-frame is bent
- Flat bed with 2" heavy duty bed on gear

## Augers

- 2011 Sudenga 31'x10" dia truck auger with 10 HP electric 220 V motor, good condition **LOT 10**
- 2010 Peck 60'x8" dia auger with 10 HP electric motor **LOT 9**
- 2005 Westfield 61'x10" dia auger with long power drive swing hopper, front PTO, good condition **LOT 8**

## Lawn Mowers

- John Deere Z-345R zero turn riding mower with 42" deck, 34 engine hours, 22 hp V-twin
- John Deere 777 Z-Trak zero turn riding mower, 570 hours, 72" deck

## Farm Equipment

- Case IH 183 hyd flat fold 12-row 30" cultivator, with rolling shields, excellent condition **LOT 19**
- M&W 1815 rotary 3-pt 15' hoe, good condition **LOT 18**
- Demco Kenride front mount 2-seat bean rider
- H & H 5-wheel 3-pt rake
- John Deere 24T square baler
- Nobles 6-section harrow on hyd cart
- Woods Cadet 5' pull type rotary mower
- 5-bottom plow with 1-arm mulcher
- Case Anthony older running gear
- Older John Deere 12' disk with hyd cylinder
- Older John Deere 4-bar side rake
- 3) older drag sections

## Miscellaneous

- 1000 gal diesel barrel with Gasboy electric pump **LOT 3**
- 500 gal diesel barrel with Fill-Rite 20 GPM electric pump **LOT 2**
- 500 gal gas barrel with Fil-Rite 20 GPM electric pump **LOT 1**
- 130 gal portable fuel tank with Fill-Rite electric pump
- 110 gal portable fuel split tank with 2) hand pumps
- Hyd log splitter on 2-wheel cart
- Forney 275 stick welder
- 32'x8' long older steel shop bench
- Older Delta drill press
- Heavy duty metal band saw
- Older grinder on stand
- Portable air compressor
- Small work bench with vise
- Franklin 30 ton shop press
- Bomgaars 25 gal poly tank sprayer with high flow—Gold Series pump
- Upright MagnaForce upright air compressor with Century electric motor, was direct wired
- Oxy and small propane tank torch set on 2-wheel cart and gauges
- Craftsman upright tool cabinet
- Large assort of hand tools (open end box end wrenches, pliers, vise gripes, crescent wrenches, socket sets, gear pullers, misc bolts, and many other hand / shop tools)
- Pacer gas motor with transfer pump
- 4" bench vise
- Steele SP-GG600 portable 6000 watt generator
- Shop stand on rollers
- Mr. Heater propane heater, small
- Antique platform scale
- Dual wheel tool to put on dual tractor tires
- Propane furnace
- Jack stands
- Small floor jack
- Green Mountain Grill Daniel Boone pellet grill
- Valucraft 12" band saw, variable speed
- Craftsman 3/4 HP drill press on stand
- Craftsman table saw
- Misc lumber
- Steel T-posts

**Live & Online Bidding!**

**Online bidding on lots  
1-38 to begin at approx  
11:30 AM**

**Rick  
Ginger  
Estate**

**Live Bidding Terms:** Not responsible for accidents or theft of items purchased on premises. Buyer's number system used. Driver's license required for bidder's number. Cash, check, credit card (with convenience fee) accepted. Clerks reserve the right to verify all unknown checks. ALL ITEMS MUST BE PAID FOR BEFORE REMOVING THEM FROM THE PREMISES. While every effort has been made to ensure the accuracy of this listing, no responsibility is assumed for additions, deletions or corrections to this ad. Information contained within this advertising was received from sources deemed to be reliable; however, no warranties are provided by the auction company regarding these. All prospective bidders are encouraged to take whatever steps necessary to satisfy themselves regarding the sizes, years, and condition, and all other information provided in this advertisement. Auction company acts only as agent between seller & buyer. LOOK BEFORE YOU BUY! ALL ITEMS ARE SOLD "AS IS-WHERE IS." THERE ARE NO WARRANTIES EXPRESSED OR IMPLIED.

**Online Bidding Terms:** Equipment will be sold LIVE & ONLINE by lots. For online bids ONLY there will be a 5% buyers premium per item with a \$750 cap fee per item. View www.vw72.com for more info & photos. Online bidding will begin August 13 at approximately 11:30 AM. This property is being sold "as-is" "where-is". Items can be picked up the day of the auction or at an approved pick up time. Payment must be verified and received prior to pick up. Additional terms and conditions are posted online. Potential bidders must agree to these terms and conditions prior to registering and bidding. Online announcements will supersede any written advertising information.

**Auction Company Note:** We're privileged to offer this great line of late model farm equipment for the Ginger Estate. Much of the equipment is one owner. Check out the low hour tractors! Major items of equipment always shedded. Here's one you want to miss! Additional photos online. We will begin on small items at 10:30 AM. The 38 major items of equipment will be offered live and online beginning at approx. 11:30 AM. Upon the conclusion of the 38 major items, we will then sell the remaining equipment and small items. Thanks for your interest in this great auction! Rich, Todd, Levi, Brent & Shannon

**Vander Werff  
Associated, Inc.**

**www.vw72.com**

215 Main St.  
Sanborn, IA 51248  
712-729-3264  
auctions@tcaexpress.net



**Rich Vander Werff**  
Sanborn, IA  
712-261-0298

## Auctioneers

**Todd Hattermann**  
Paulina, IA  
712-348-0111

**Levi Mouw**  
Edgerton, MN  
712-441-6898

**Brent Vander Werff**  
Sanborn, IA  
712-540-7591

